

**Includes models**  
 B2-01  
 B2-1SGK  
 B2-SG

# B2-01 & B2-SG BOOSTER GUN



## INSTRUCTION MANUAL (Available with Optional Trigger Guard)

### Introduction

Thank you for purchasing either a Macnaught Model B2 or B2-SG Booster Gun.

### Product Description

The Macnaught B2 Booster Gun is a high pressure hose end dispensing gun designed for use with air operated greasing systems such as the Macnaught Powerlube and Maxilube model grease pumps.

The Booster Gun includes a 360 deg Z swivel assembly and incorporates a booster mechanism which allows the user to boost the greasing pressure up to 69MPa / 10,000 psi / 690 Bar when required.

### Important Information

**PLEASE READ THIS SAFETY INFORMATION CAREFULLY BEFORE USE.**

Read and retain this instruction manual to assist you in the operation and maintenance of this product.

'CAUTIONS' are listed throughout this manual to advise of actions that may cause damage to your equipment.

### Operation

- 1) Ensure that the gun coupler is securely positioned onto the grease nipple (zerk).
- 2) Squeeze the trigger mechanism to allow grease to be dispensed into the grease nipple (zerk).
- 3) If no grease flows because of a seized nipple (zerk), pull the trigger several times. Each squeeze of the trigger increases (boosts) the greasing pressure until grease flows.



### CAUTION

Disconnect the air supply before servicing



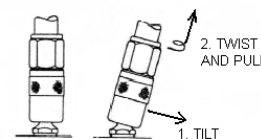
### WARNING

Grease is being dispensed at high pressure. Keep your hands away from the nipple (zerk) / coupler connection at all times.



Shown with optional trigger guard

THE CORRECT METHOD FOR REMOVING THE KY COUPLER FROM A GREASE NIPPLE



- 4) To remove the coupler from the nipple (zerk), tilt the gun to relieve the pressure and then twist and pull the gun to disconnect from the nipple (zerk).

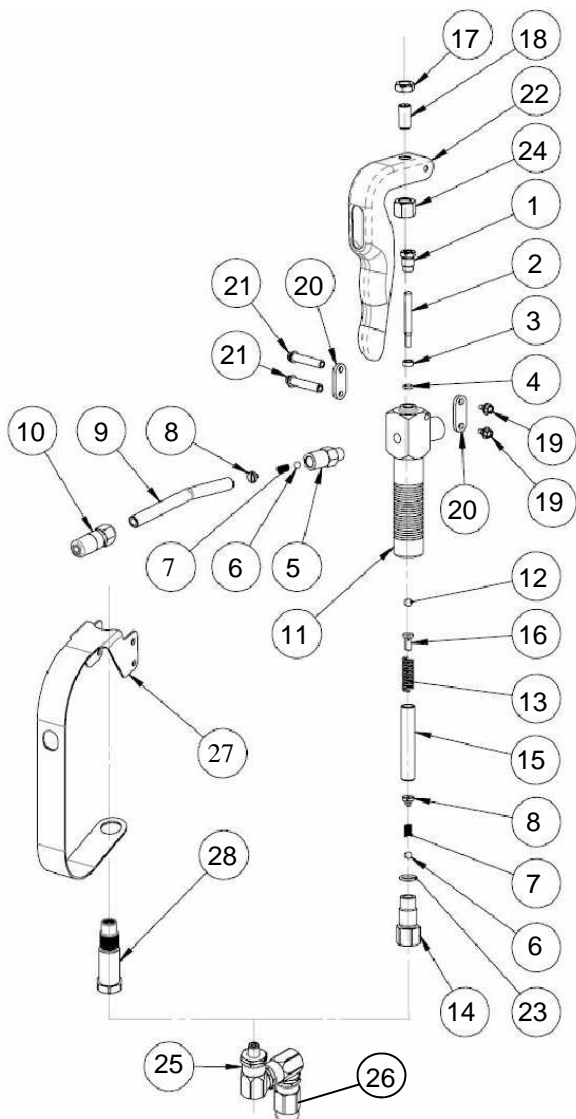
### Product Specifications

<b>Application</b>	Lubrication grease up to NLGI No. 2 Viscosity
<b>Maximum Working Pressure</b>	10,000 psi 69 MPa 690 Bar
<b>Connections</b>	¼" NPT (F) Z Swivel Assembly
<b>Approximate Weight</b>	0.75 kgs 1.5 lbs

## Troubleshooting Guide

<b>Problem</b>	<b>Possible Cause</b>	<b>Remedy</b>
Booster fails to boost	Contaminant under the non-return valve body (5) ball seat.	Unscrew the extension tube (9) from the non-return valve body (5).  Remove items 8, 7, 6 and 5. Clean all parts and reassemble.
	Contaminant under the valve seat in the inlet body (14).	Unscrew the inlet body (14) from the gun body (11). Unscrew the valve, insert (8). Remove the valve spring (7) and steel ball (6). Clean the ball seat and reassemble.
Gun leaks continuously from the coupler	Incorrect trigger setting.	Loosen the locknut (17) and screw the plunger adjusting screw (18) out until the trigger has free play.
	Contaminant under ball (12) or bent plunger (2)	Unscrew the inlet body (14) from the gun body (11).  Unscrew the extension tube (9) and swing the trigger away, then remove the plunger guide bush (1), plunger (2), backup washer (3) and plunger o-ring (4).  This will enable the ball (12), ball support (16) ball spring (13) and guide spring (15) to be removed from the gun body (11).  Inspect, clean and replace all parts using a new plunger guide bush (1).  Note: Apply teflon tape (or thread sealant) to the extension tube (9).
Grease leaks past the plunger	Plunger O-Ring (4) damaged.	Remove the extension tube (9), swing the trigger (22) away, and remove the plunger guide bush (1) plunger (2) backup washer (3) and plunger o-ring (4).  Inspect, clean and replace all parts using a new plunger o-ring (4) and plunger guide bush (1).  Note: Apply teflon tape (or thread sealant) to the extension tube (9).

## Spare Part Diagram



## Spare Part Listing

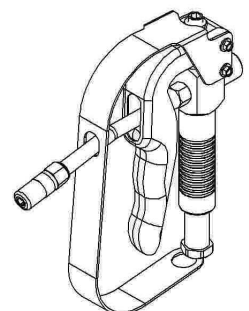
		Order for replacement		
Item	No. off	Part / set	Kit ref	Description
		B2-1K (KIT A)		
1	1		A	Plunger guide bush
2	1		A	Plunger
3	1		A	Backup washer
4	1		A	O'ring (BS008)
5	1		A	Valve body
9	1	KH23s		Extension tube
10	1	KY		Coupler
11	1	n/a		Gun body
12	1		A	1/4" Steel ball
16	1		A	Ball support
13	1		A	Ball spring
15	1		A	Spring guide
8	2		A	Valve insert
7	2	for B2-01 model order BJ24s	A	Valve spring
6	2	for B2-SG model order B2-1SGK	A	7/32" Steel ball
23	1		A	O'ring (BS013)
14	1			Inlet body
20	2			Trigger link
21	2			Link pin
19	2	BJ26s		Screw
17	1			Lock nut
18	1			Adjusting screw
24	1			High nut
22	1	n/a		Trigger
25	2	ZSB		Swivel adapter assembly
26	1			Swivel body assembly
27	1	B2-1SGK *		Trigger Guard
28	1	*		Inlet body



**Note: Items 27 and 28 are only supplied on Model B2-SG**

- \* Item 27 Trigger Guard
- \* Item 28 Inlet Body

For replacement trigger guard kit order part set B2-1SGK



(Model B2-SG)



**Macnaught Pty Limited**

ABN 66 000 075 785

41-49 Henderson Street  
Turrella NSW 2205 Sydney Australia  
Postal Address PO Box 90  
Amcliffe NSW 2205 Sydney Australia

**T:** +61 2 9567 0401

**F:** +61 2 9597 7773

**W:** [www.macnaught.com.au](http://www.macnaught.com.au)

**For Warranty Terms and Conditions see [macnaught.com.au](http://macnaught.com.au)  
For a list of Australian Service Centres see [macnaught.com.au](http://macnaught.com.au)**